

KCA, KOREA CAREGIVER ASSOCIATION

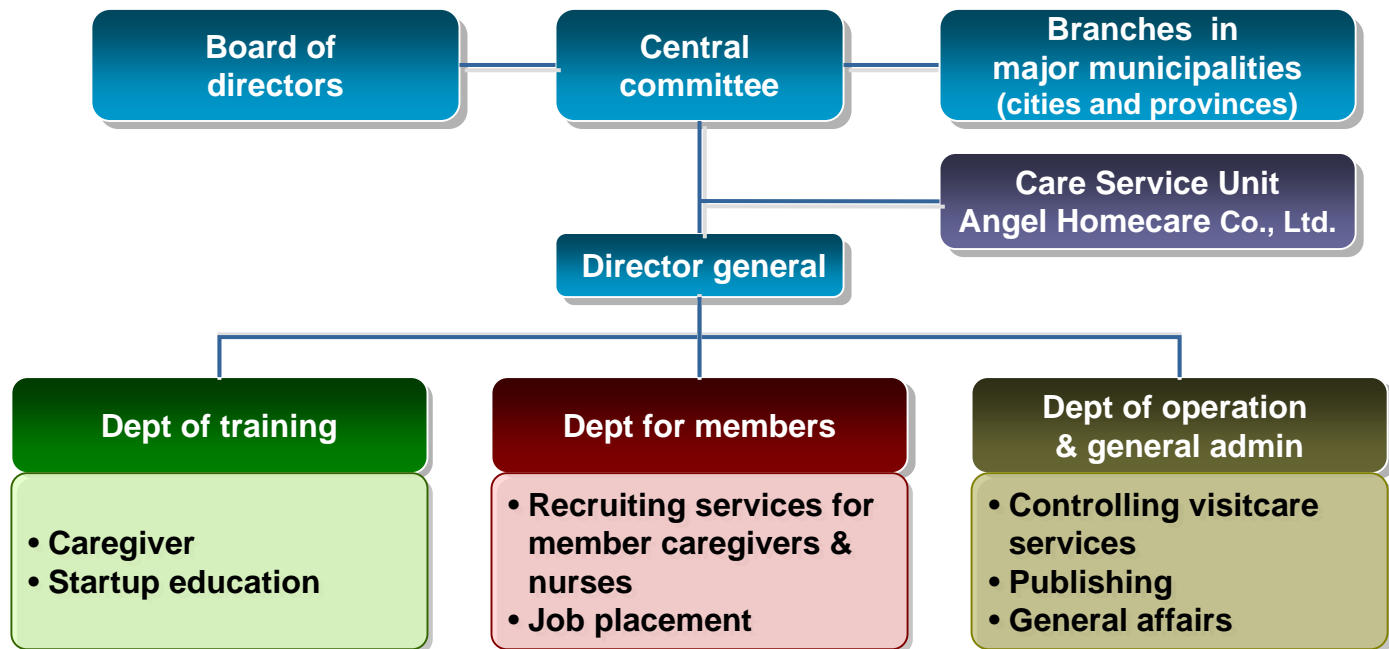
Jan, 2008

Korea's largest institute for welfare of caregivers

❑ Location

- 1558 - 8, Seocho-dong, Seocho-gu, Seoul, Korea
- Tel 02-3486-7230 Fax 02-3486-7219

❑ Core org chart



☐ KCA's functions

Training of caregivers	<ul style="list-style-type: none"> • KCA headquarters and nationwide branches • Colleges and professional institutes under contracts 	
Assisting startup of nursing facilities	<ul style="list-style-type: none"> • Giving lectures on startup • Consultation on startup 	
Supporting activities for members	▪ Individual members	• Job placement and consultation on labor disputes
	▪ Facilities members	• Recruit broking, labor consultation, facilities promotion, disease prevention project for seniors
Care Service Division	▪ Homecare franchising	<ul style="list-style-type: none"> • U-healthcare • Visitcare

☐ 2008 plan of caregivers training

Target number	• 48,000 (first grade, second grade to be trained among new entrants, social workers, nurses and assistant nurses)
Education beginning	• Feb. 4, 2008
Education programs	• College of Nursing, Sungshin University (including education materials)
Education institutes	• Deoksung University and 100 more colleges and professional institute

□ Partners and affiliates

▪ Seoul Women's College of Nursing and 100 other institutes (across the nation)	• Training	www.snjc.ac.kr
▪ College of Nursing, Sungshin University	• Education programs	www.sungshin.ac.kr/nurse
▪ Graduate School of Industry Startup, JoongAng University	• Education of nursing facilities startup	http://iem.cau.ac.kr
▪ Gachon Medical University's Gil Hospital	• Visitcare services	www.gilhospital.com
▪ Incruit Co., Ltd.	• Job placement and human resources	www.incruit.com
▪ Industrial Bank of Korea	• Issuing members cards for caregivers	www.ibk.co.kr
▪ Upsun Medical	• Selling healthcare products	www.upsunmedical.com